

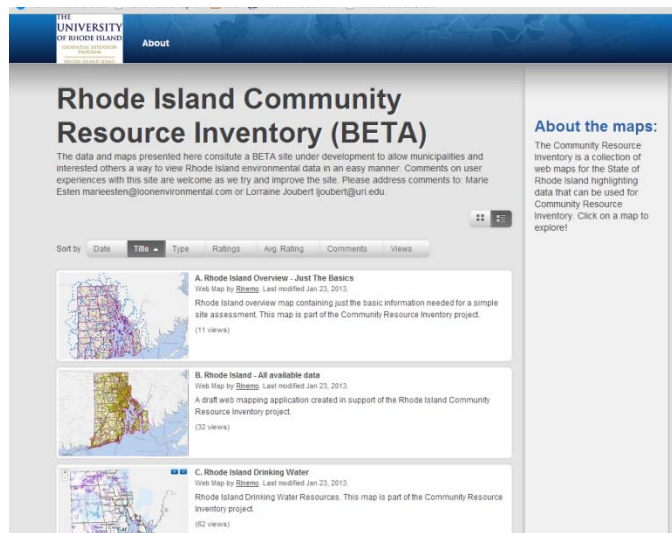
RI Community Resource Inventory Maps

Online maps to support local planning and land use decisions

1. RI Community Resource Inventory Map Gallery * TEST SITE*

Explore ready-made maps using the ArcGIS online Map Gallery. Features easy-to-use, interactive maps with click on /off data layers. Includes an Overview map for quick access to resource basics, an All Available Data map with everything in one convenient place, and several other maps organized by topic. Created by URI Cooperative Extension, RI NEMO, with support by the URI Geospatial Extension Program. GIS assistance provided by Marie Esten, Loon Environmental, LLC.

Go to: <http://www.loonenvironmental.com/URI/public-maps-gallery/>

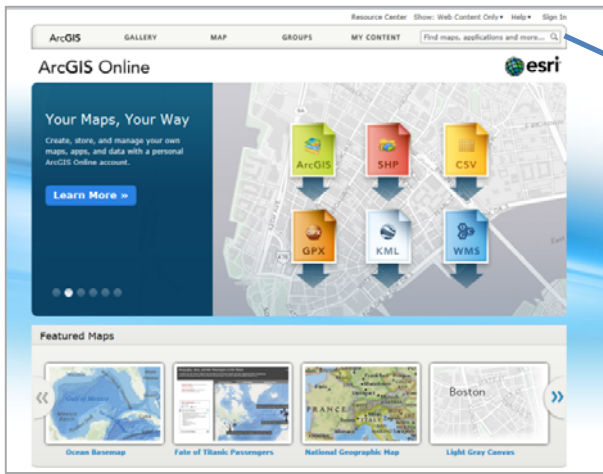


2. Community Resource Inventory Maps in ArcGIS Online

Make your own map using ArcGIS online Maps. Created by Greg Bonygne, URI Geospatial Extension Program. Start with any map in the Map Gallery and bring it into either ArcGIS Explorer or Map Viewer. Or, go directly to the Community Resource Inventory:

Go to: <http://www.arcgis.com/home/>

- Type “Rhode Island Community Resource Inventory” or “RI CRI” in the search window



Search Window

- Select the Rhode Island Community Resource Inventory from the list.



Rhode Island Community Resource Inventory

A draft web mapping application created in support of the Rhode Island Community Resource Inventory project.

Web Map by URIEDC
Last Modified: March 8, 2012

☆☆☆☆☆ (0 ratings, 0 comments, 737 views)

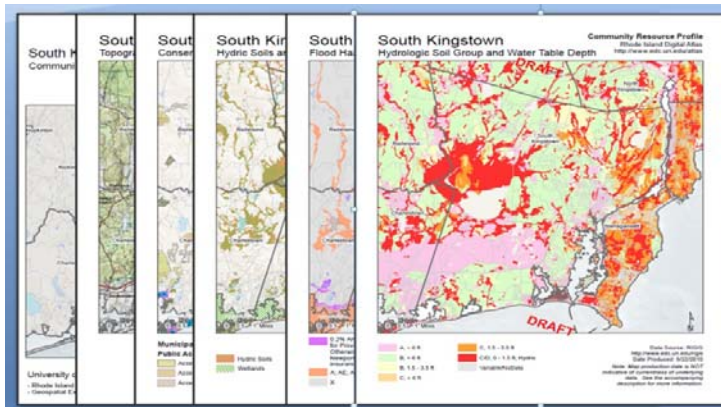
Open Details

- Click onto “Open” to open the map using ArcGIS Explorer Online.

3. RI Community Resource Profiles

View and download a set of 25 natural resource /cultural maps for each RI municipality in PDF format. Created by Greg Bonyng, URI Geospatial Extension program in partnership with RI and CT NEMO programs.

Go to: <http://www.edc.uri.edu/atlas/profiles/>



Contacts

Please send your comments on the RI map gallery or other maps above to:
Lorraine Joubert, URI Cooperative Extension, RI NEMO ljoubert@uri.edu or
Marie Esten at maireesten@loonenvironmental.com

The CRI project is funded by the RI Department of Health, Office of Drinking Water and the URI Renewable Resources Extension Act Program. URI Cooperative Extension provides equal opportunities in programs and employment. January, 2013



THE
 UNIVERSITY
 OF RHODE ISLAND
 COOPERATIVE
 EXTENSION